



**US Army Corps  
of Engineers**

Little Rock District

# **Appendix B**

## **Land Parcel Maps**

**for the**

**Beaver Lake**

**Proposed Land Acquisition Study**

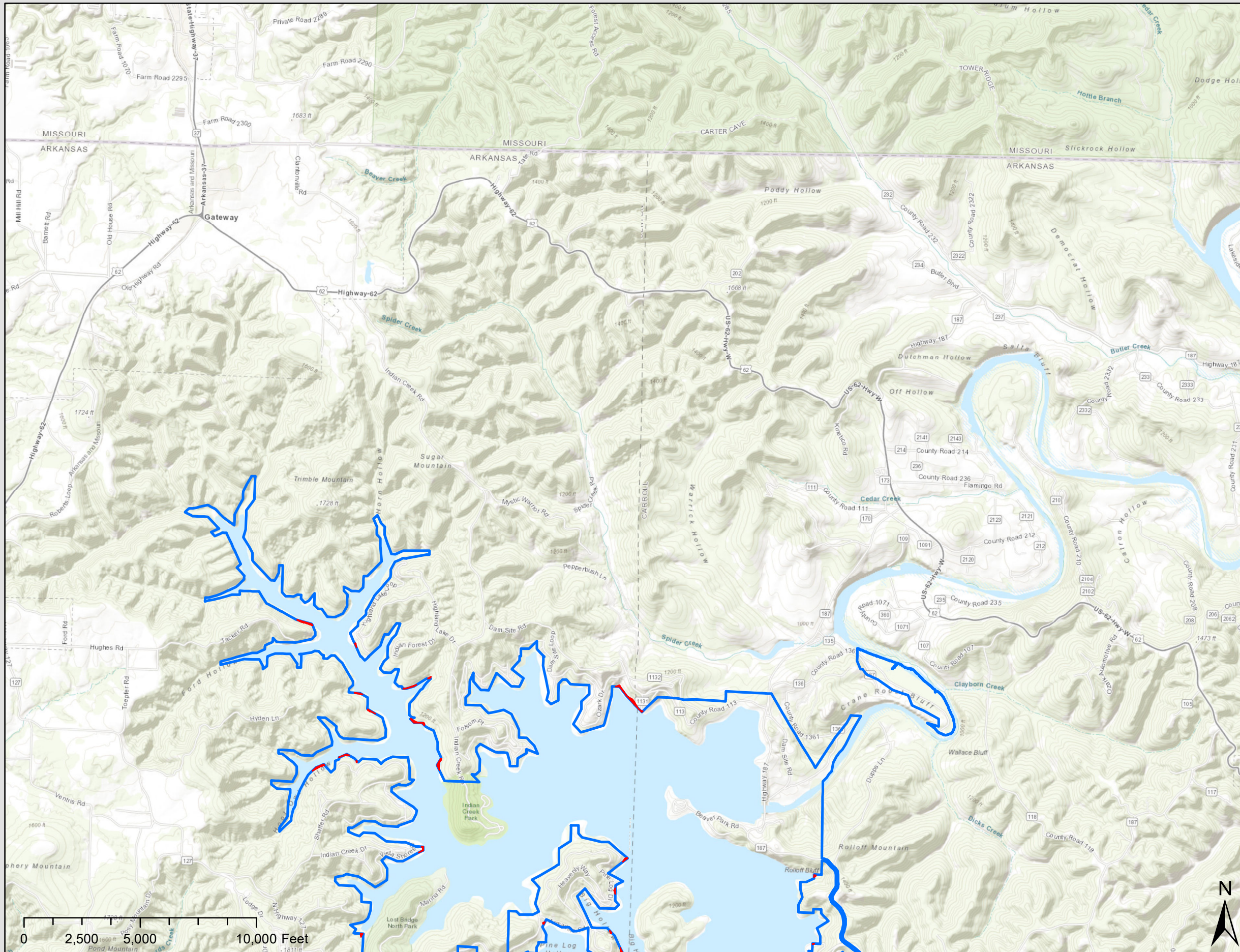
**July 2023**







US Army Corps  
of Engineers®  
Little Rock District  
Real Estate Division

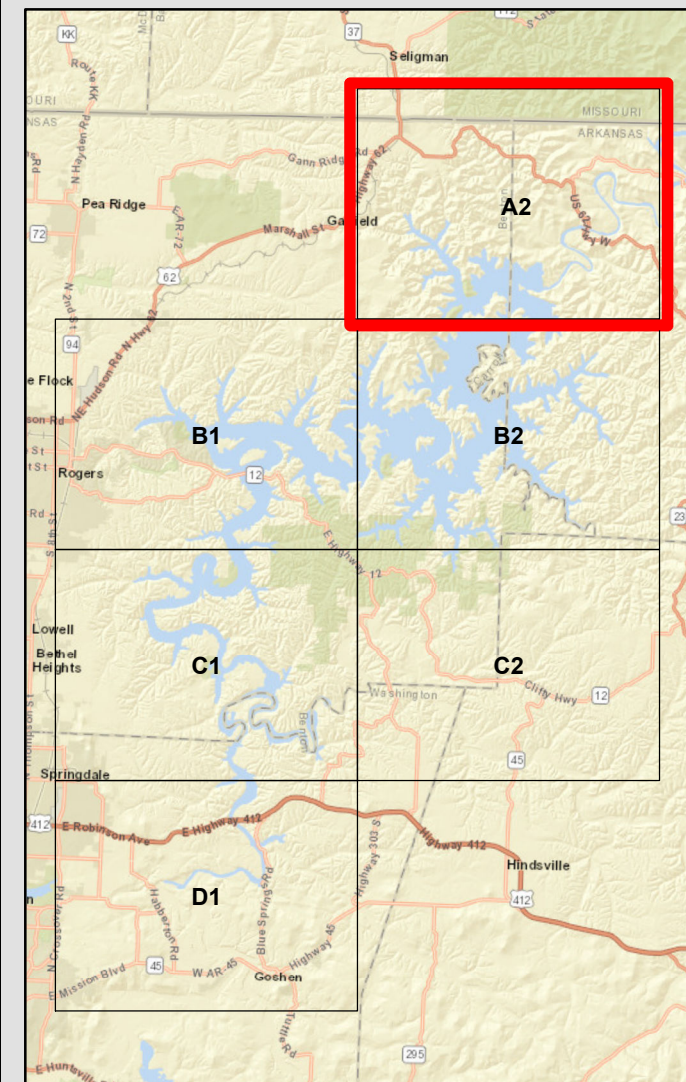
## Beaver Lake - Potential Acquisition - Lake Area: #A2



## Beaver Lake Potential Acquisition Lake Area: #A2

-  Potential Acquisition
-  USACE Fee Boundary

While the United States Army Corps of Engineers (hereinafter referred to as USACE) has made a reasonable effort to insure the accuracy of the maps and associated data, it should be explicitly noted that USACE makes no warranty, representation or guaranty, either express or implied, as to the content, sequence, accuracy, timeliness or completeness of any of the data provided herein. The USACE, its officers, agents, employees, or servants shall assume no liability of any nature for any errors, omissions, or inaccuracies in the information provided regardless of how caused. The USACE, its officers, agents, employees or servants shall assume no liability for any decisions made or actions taken or not taken by the user of the maps and associated data in reliance upon any information or data furnished here. By using these maps and associated data the user does so entirely at their own risk and explicitly acknowledges that he/she is aware of and agrees to be bound by this disclaimer and agrees not to present any claim or demand of any nature against the USACE, its officers, agents, employees or servants in any forum whatsoever for any damages of any nature whatsoever that may result from or may be caused in any way by the use of the maps and associated data.

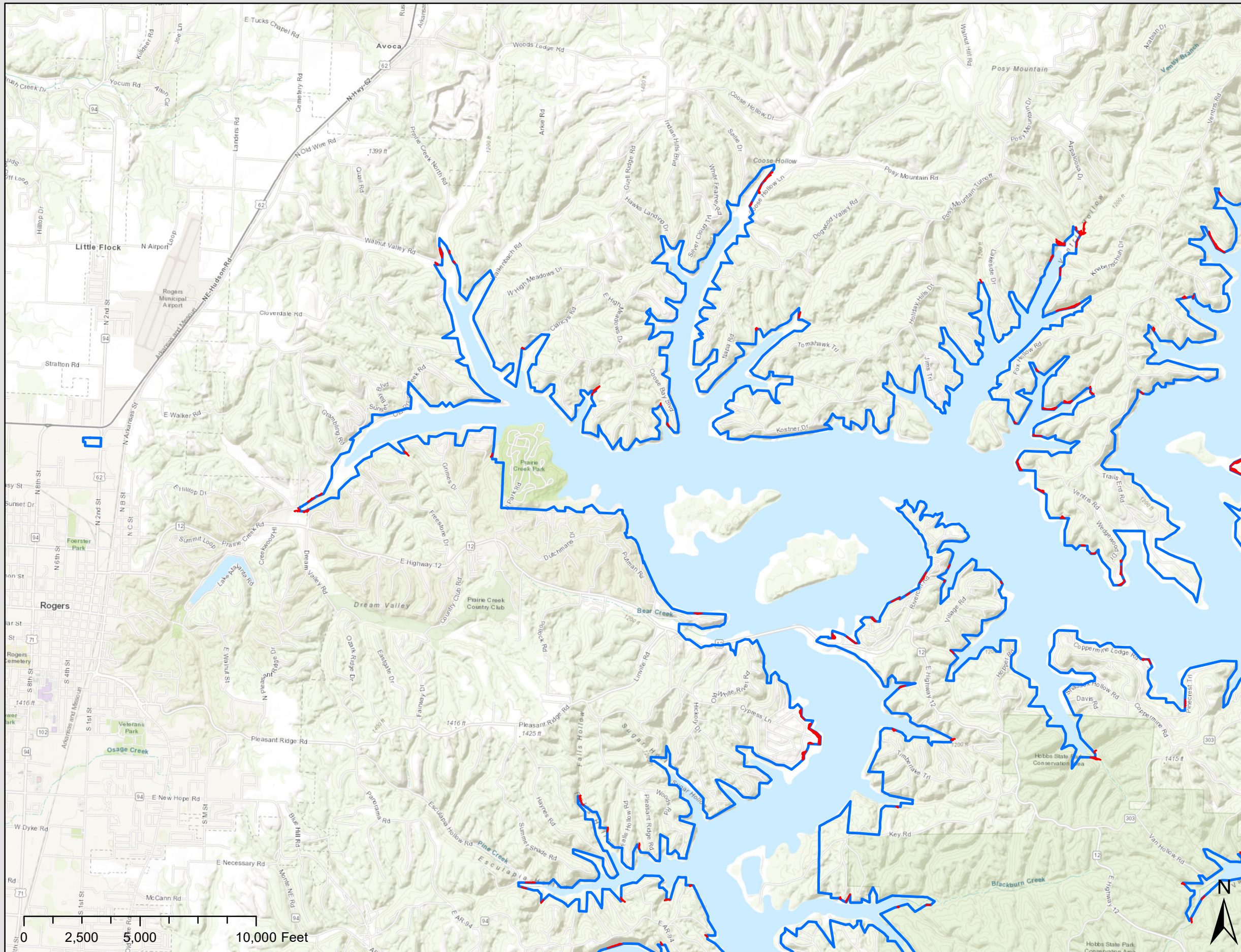






US Army Corps  
of Engineers®  
Little Rock District  
Real Estate Division

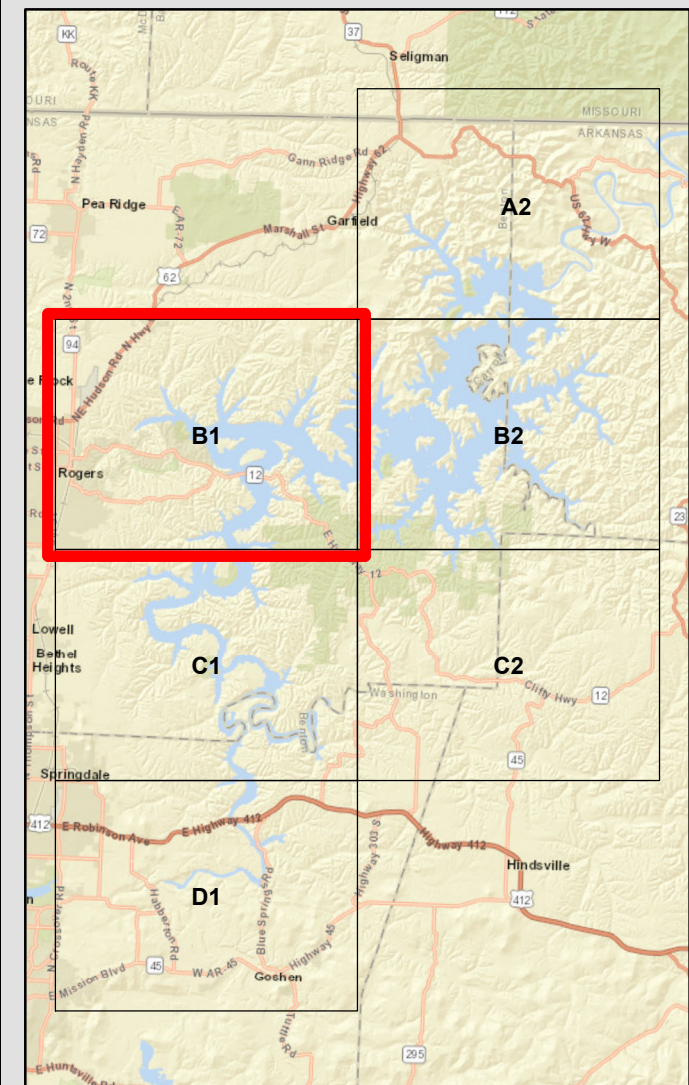
## Beaver Lake - Potential Acquisition - Lake Area: #B1



## Beaver Lake Potential Acquisition Lake Area: #B1

- Potential Acquisition
- USACE Fee Boundary

While the United States Army Corps of Engineers (hereinafter referred to as USACE) has made a reasonable effort to insure the accuracy of the maps and associated data, it should be explicitly noted that USACE makes no warranty, representation or guaranty, either express or implied, as to the content, sequence, accuracy, timeliness or completeness of any of the data provided herein. The USACE, its officers, agents, employees, or servants shall assume no liability of any nature for any errors, omissions, or inaccuracies in the information provided regardless of how caused. The USACE, its officers, agents, employees or servants shall assume no liability for any decisions made or actions taken or not taken by the user of the maps and associated data in reliance upon any information or data furnished here. By using these maps and associated data the user does so entirely at their own risk and explicitly acknowledges that he/she is aware of and agrees to be bound by this disclaimer and agrees not to present any claim or demand of any nature against the USACE, its officers, agents, employees or servants in any forum whatsoever for any damages of any nature whatsoever that may result from or may be caused in any way by the use of the maps and associated data.

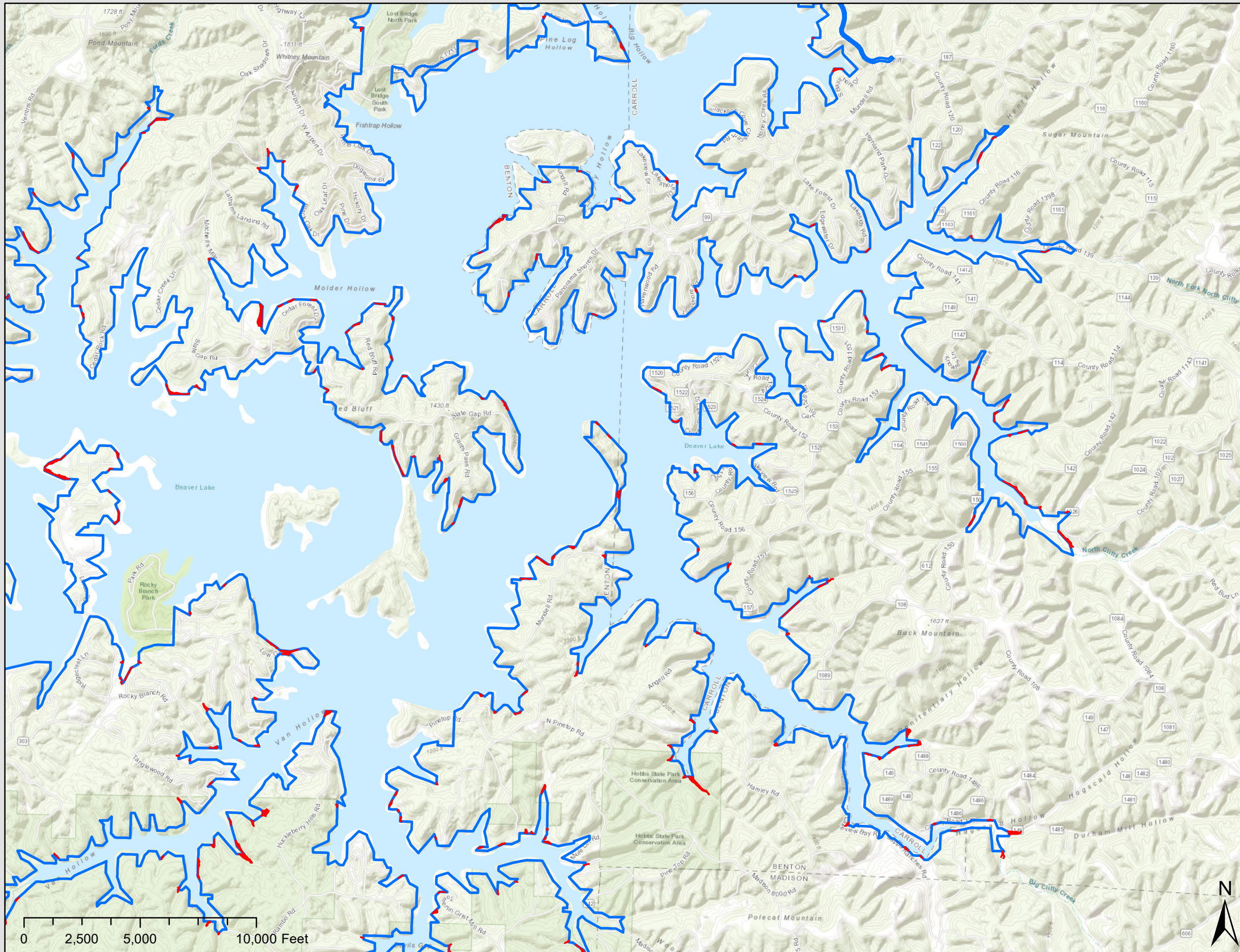






US Army Corps  
of Engineers®  
Little Rock District  
Real Estate Division

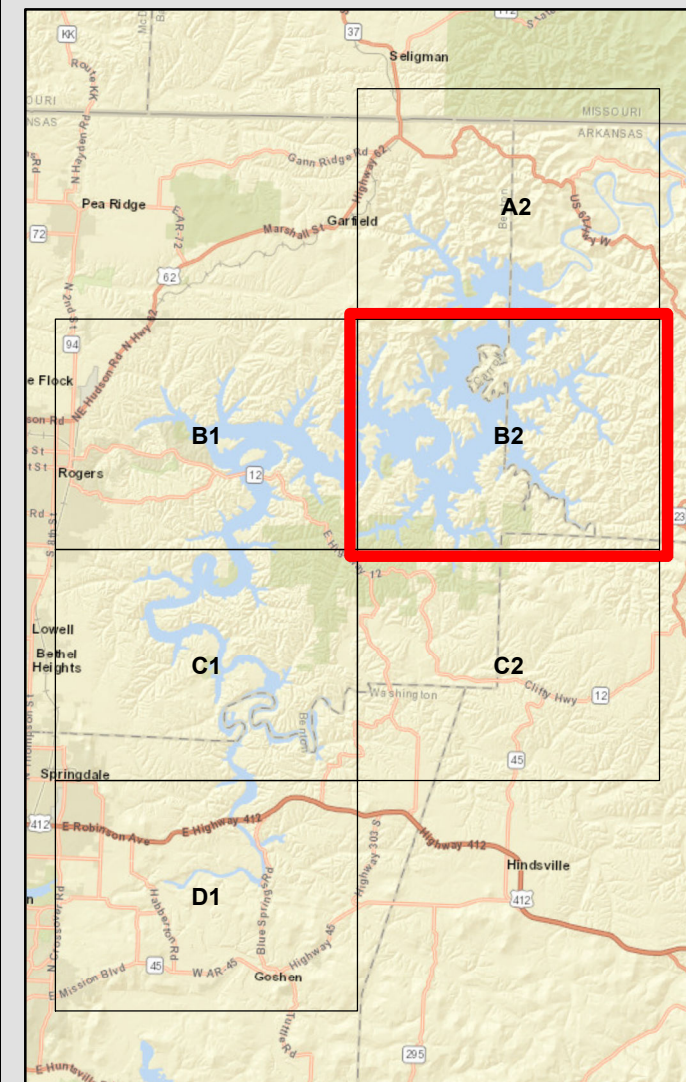
## Beaver Lake - Potential Acquisition - Lake Area: #B2



## Beaver Lake Potential Acquisition Lake Area: #B2

- Potential Acquisition
- USACE Fee Boundary

While the United States Army Corps of Engineers (hereinafter referred to USACE) has made a reasonable effort to insure the accuracy of the maps and associated data, it should be explicitly noted that USACE makes no warranty, representation or guaranty, either express or implied, as to the content, sequence, accuracy, timeliness or completeness of any of the data provided herein. The USACE, its officers, agents, employees, or servants shall assume no liability of any nature for any errors, omissions, or inaccuracies in the information provided regardless of how caused. The USACE, its officers, agents, employees or servants shall assume no liability for any decisions made or actions taken or not taken by the user of the maps and associated data in reliance upon any information or data furnished here. By using these maps and associated data the user does so entirely at their own risk and explicitly acknowledges that he/she is aware of and agrees to be bound by this disclaimer and agrees not to present any claim or demand of any nature against the USACE, its officers, agents, employees or servants in any forum whatsoever for any damages of any nature whatsoever that may result from or may be caused in any way by the use of the maps and associated data.

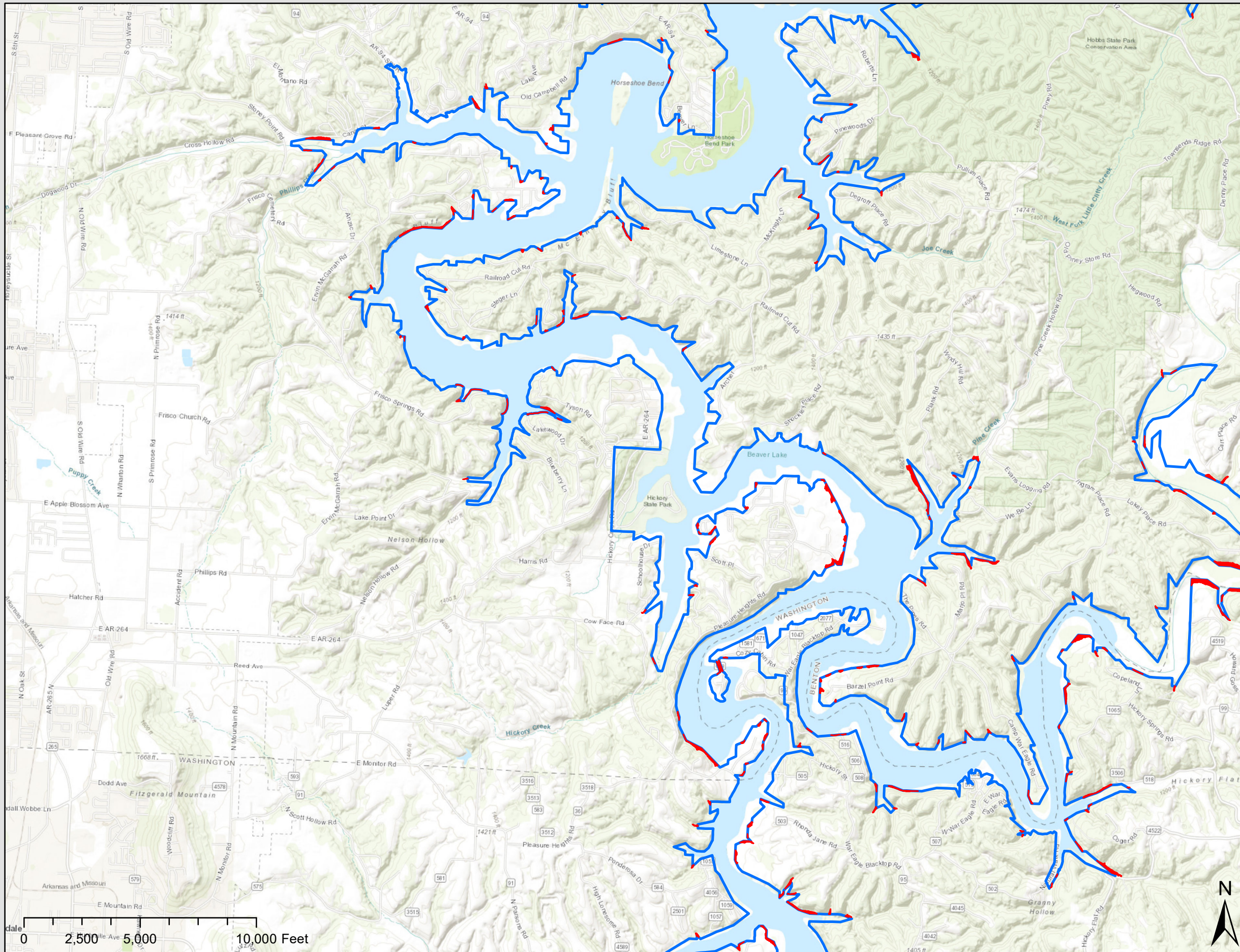






US Army Corps  
of Engineers®  
Little Rock District  
Real Estate Division

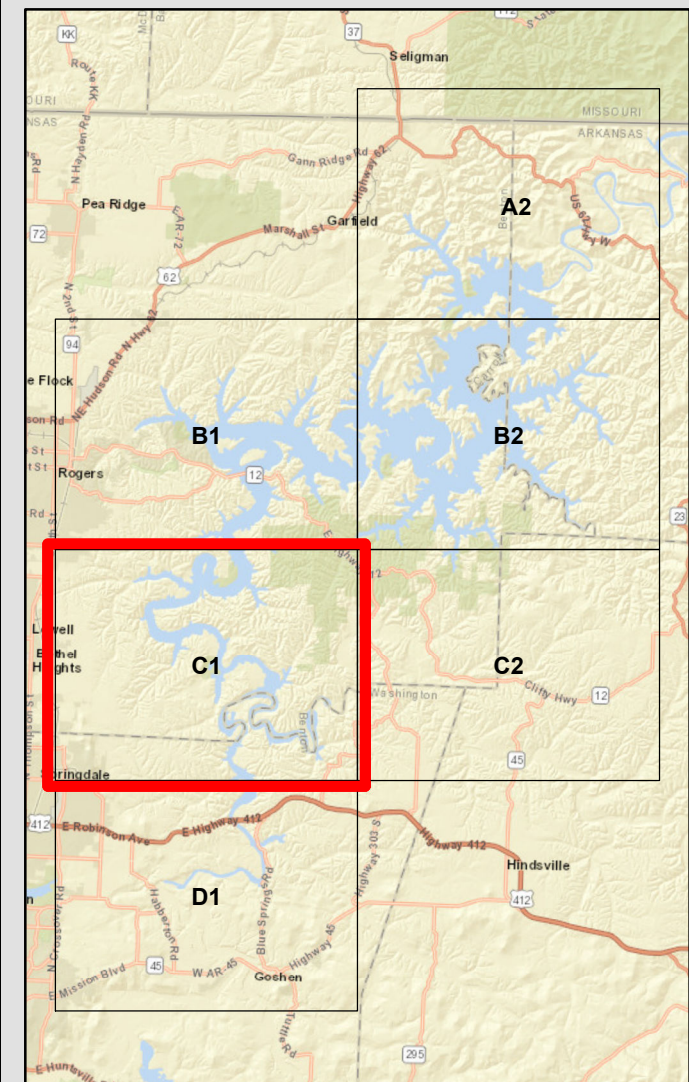
## Beaver Lake - Potential Acquisition - Lake Area: #C1



## Beaver Lake Potential Acquisition Lake Area: #C1

- Potential Acquisition
- USACE Fee Boundary

While the United States Army Corps of Engineers (hereinafter referred to as USACE) has made a reasonable effort to insure the accuracy of the maps and associated data, it should be explicitly noted that USACE makes no warranty, representation or guaranty, either express or implied, as to the content, sequence, accuracy, timeliness or completeness of any of the data provided herein. The USACE, its officers, agents, employees, or servants shall assume no liability of any nature for any errors, omissions, or inaccuracies in the information provided regardless of how caused. The USACE, its officers, agents, employees or servants shall assume no liability for any decisions made or actions taken or not taken by the user of the maps and associated data in reliance upon any information or data furnished here. By using these maps and associated data the user does so entirely at their own risk and explicitly acknowledges that he/she is aware of and agrees to be bound by this disclaimer and agrees not to present any claim or demand of any nature against the USACE, its officers, agents, employees or servants in any forum whatsoever for any damages of any nature whatsoever that may result from or may be caused in any way by the use of the maps and associated data.

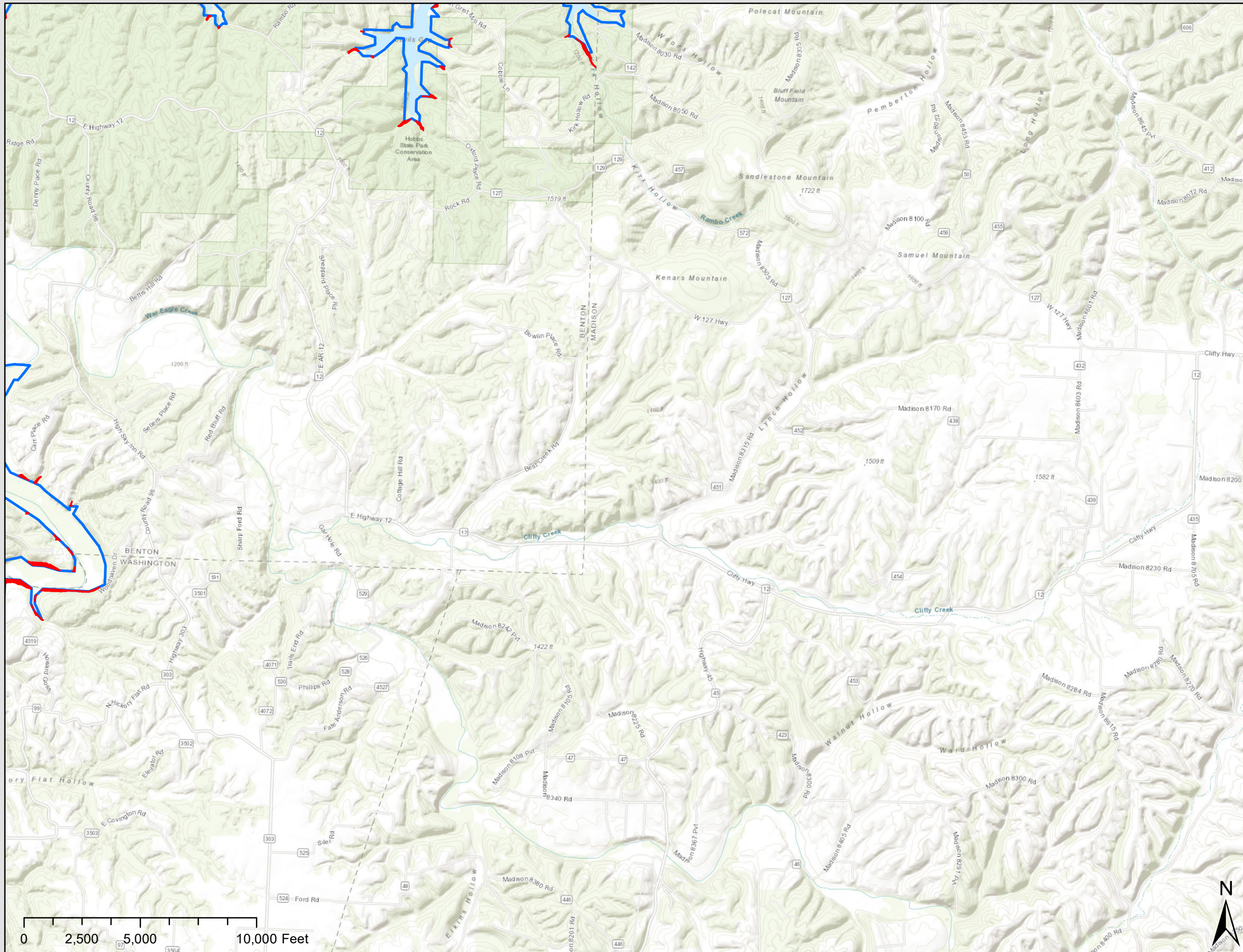








US Army Corps  
of Engineers®  
Little Rock District  
Real Estate Division

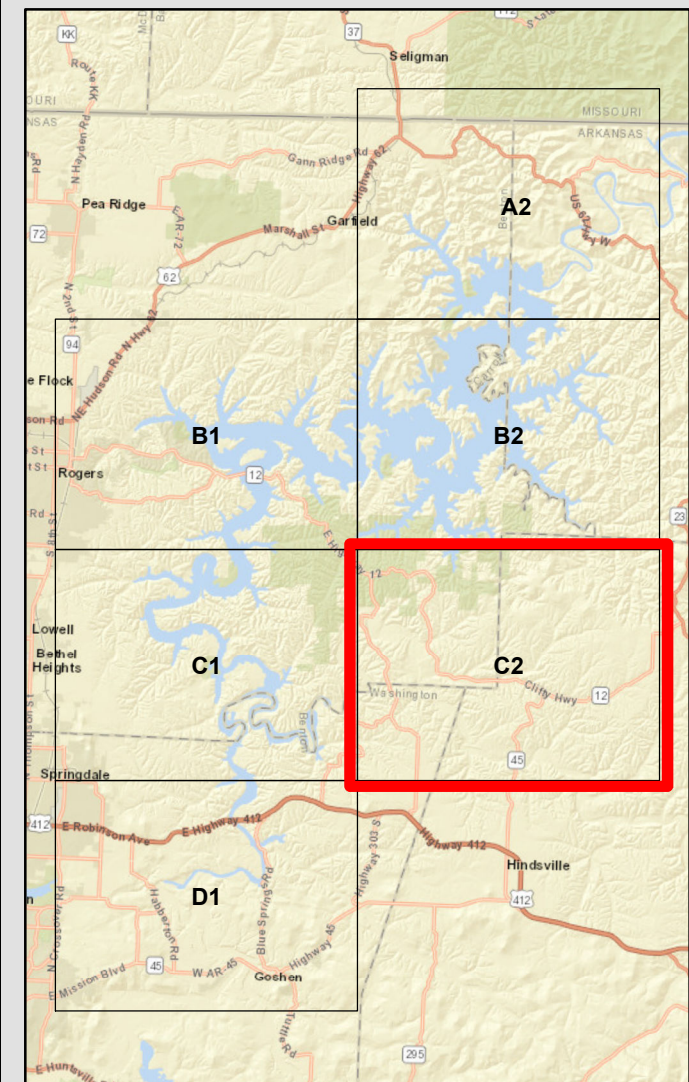
## Beaver Lake - Potential Acquisition - Lake Area: #C2



## Beaver Lake Potential Acquisition Lake Area: #C2

-  Potential Acquisition
-  USACE Fee Boundary

While the United States Army Corps of Engineers (hereinafter referred to as USACE) has made a reasonable effort to insure the accuracy of the maps and associated data, it should be explicitly noted that USACE makes no warranty, representation or guaranty, either express or implied, as to the content, sequence, accuracy, timeliness or completeness of any of the data provided herein. The USACE, its officers, agents, employees, or servants shall assume no liability of any nature for any errors, omissions, or inaccuracies in the information provided regardless of how caused. The USACE, its officers, agents, employees or servants shall assume no liability for any decisions made or actions taken or not taken by the user of the maps and associated data in reliance upon any information or data furnished here. By using these maps and associated data the user does so entirely at their own risk and explicitly acknowledges that he/she is aware of and agrees to be bound by this disclaimer and agrees not to present any claim or demand of any nature whatsoever for any damages of any nature whatsoever that may result from or may be caused in any way by the use of the maps and associated data.

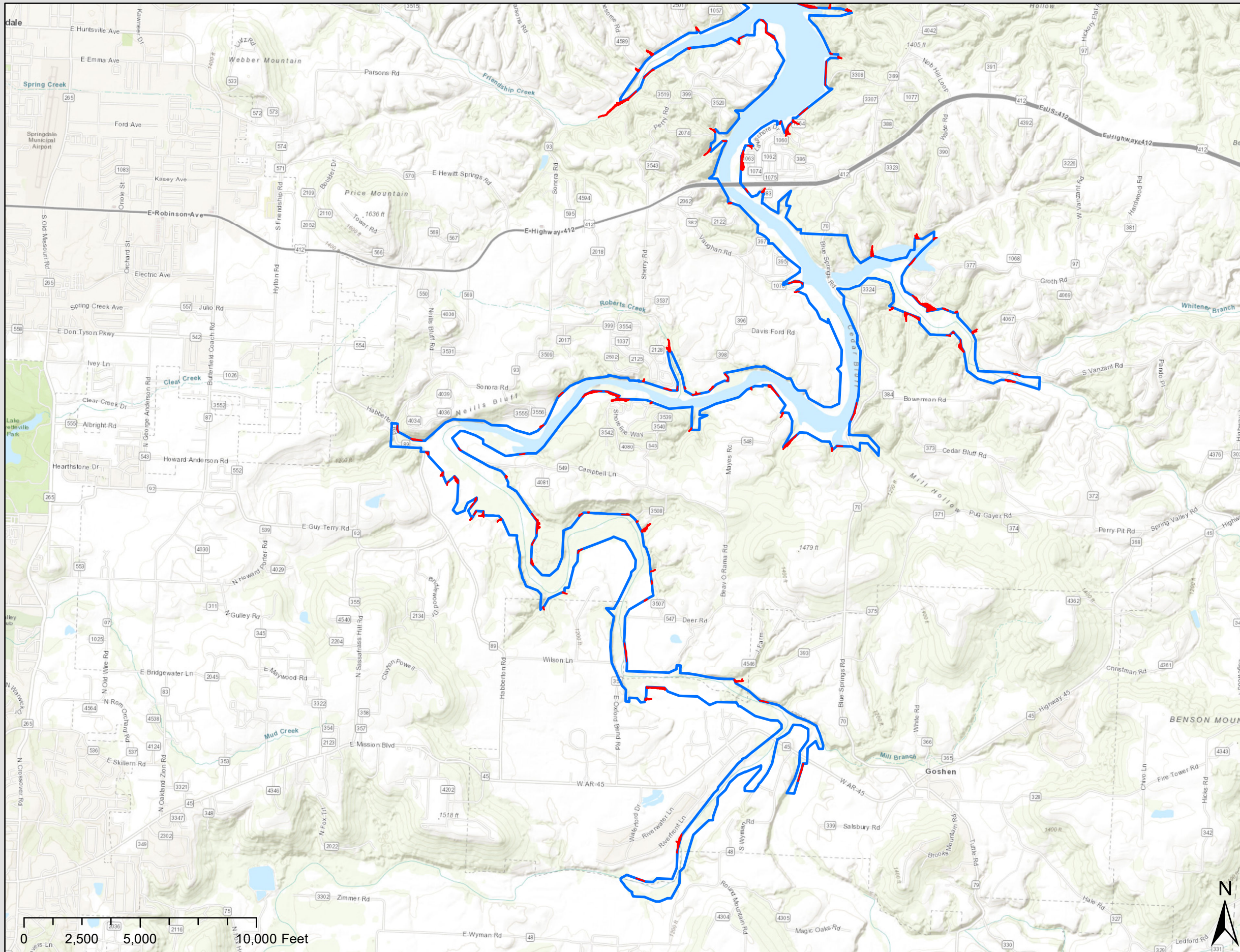






US Army Corps  
of Engineers®  
Little Rock District  
Real Estate Division

## Beaver Lake - Potential Acquisition - Lake Area: #D1



## Beaver Lake Potential Acquisition Lake Area: #D1

- Potential Acquisition
- USACE Fee Boundary

While the United States Army Corps of Engineers (hereinafter referred to as USACE) has made a reasonable effort to insure the accuracy of the maps and associated data, it should be explicitly noted that USACE makes no warranty, representation or guaranty, either express or implied, as to the content, sequence, accuracy, timeliness or completeness of any of the data provided herein. The USACE, its officers, agents, employees, or servants shall assume no liability of any nature for any errors, omissions, or inaccuracies in the information provided regardless of how caused. The USACE, its officers, agents, employees or servants shall assume no liability for any decisions made or actions taken or not taken by the user of the maps and associated data in reliance upon any information or data furnished here. By using these maps and associated data the user does so entirely at their own risk and explicitly acknowledges that he/she is aware of and agrees to be bound by this disclaimer and agrees not to present any claim or demand of any nature against the USACE, its officers, agents, employees or servants in any forum whatsoever for any damages of any nature whatsoever that may result from or may be caused in any way by the use of the maps and associated data.

